



## FDTC50VH / SRC50ZSX-W3

5.0 ( 1.1 ~ 5.6 )

Indoor Unit : FDTC50VH

Outdoor Unit : SRC50ZSX-W3

### Specifications

R32

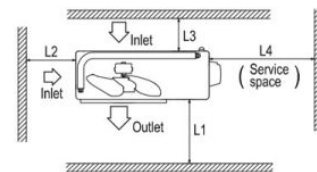
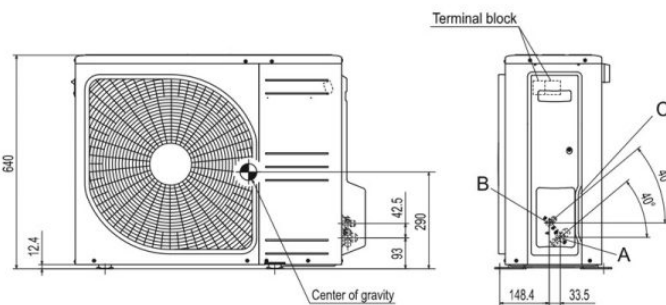
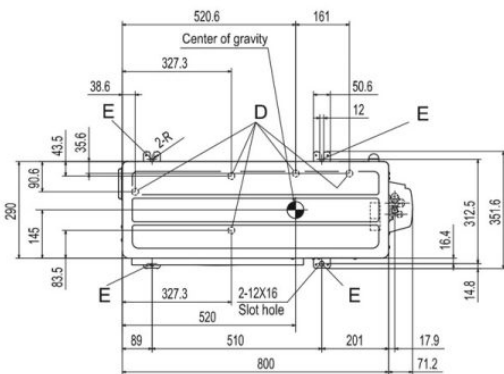
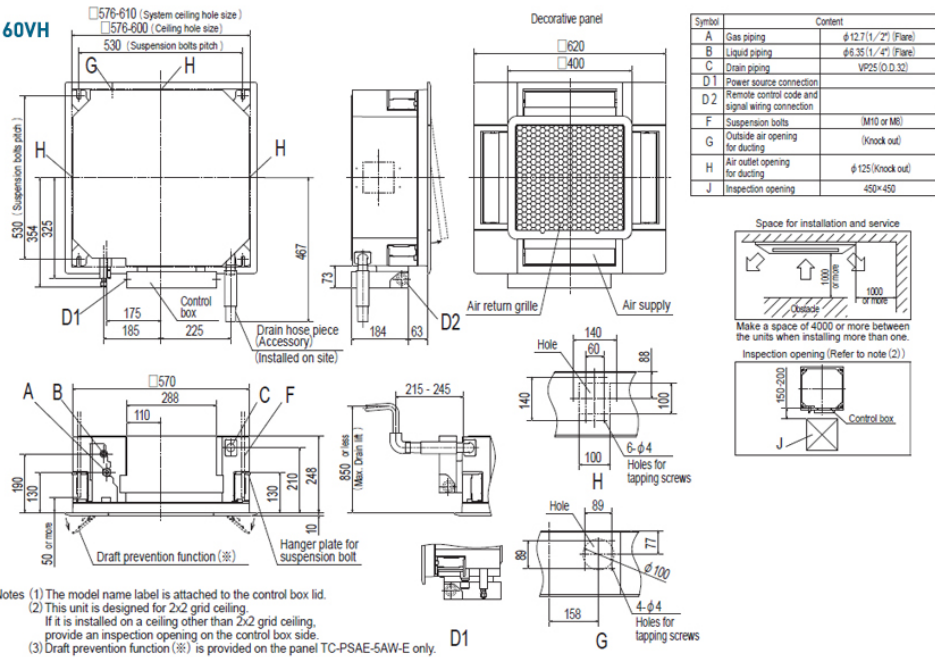
|  |                         |  |                                      |
|--|-------------------------|--|--------------------------------------|
| Indoor unit                                      |                         | FDTC50VH   |                                      |
| Outdoor unit                                     |                         | SRC50ZSX-W3  |                                      |
| Power source                                     |                         | 1Phase, 220 - 240, 50Hz  |                                      |
| Nominal cooling capacity (Min~Max)               |                         | kW   | 5.0 ( 1.1 ~ 5.6 )                    |
| Nominal heating capacity (Min~Max)               |                         | kW   | 5.4 ( 0.6 ~ 6.3 )                    |
| Power consumption                                | Cooling/Heating         | kW   | 1.40 / 1.53                          |
| EER/COP  | Cooling/Heating         |  | 3.58 / 3.53                          |
| Max. running current                             |                         | A  | 15                                   |
| Sound power level                                | Indoor                  | Cooling/Heating  | 59 / 59                              |
|  | Outdoor                 | Cooling/Heating  | 63 / 62                              |
| Sound pressure level                             | Indoor                  | Cooling (Hi/Me/Lo/Ulo)   | dB(A)<br>44 / 40 / 35 / 27           |
|  |                         | Heating (Hi/Me/Lo/Ulo)   |                                      |
|  | Outdoor                 | Cooling/Heating  | 52 / 50                              |
| Air flow   | Indoor                  | Cooling (Hi/Me/Lo/Ulo)   | m3/min<br>13 / 11 / 9 / 7            |
|  |                         | Heating (Hi/Me/Lo/Ulo)   |                                      |
|  | Outdoor                 | Cooling/Heating  | 39 / 33                              |
| Exterior Dimensions                              | Indoor                  | Height x Width x Depth   | mm                                   |
|  | Outdoor                 |  |                                      |
|  |                         | Unit : 248 x 570 x 570 Panel : 10 x 620 x 620                                  |                                      |
|  |                         | 640 x 800(+71) x 290   |                                      |
| Net weight                                       | Indoor / Outdoor        | kg   | 16.5 (Unit : 14 Panel : 2.5 ) / 45.0 |
| Refrigerant                                      | Type/GWP                |  | R32/675                              |
| Refrigerant                                      | Charge                  | kg/TCO2Eq  | 1.30 / 0.878                         |
| Refrigerant piping size                          | Liquid/Gas              | mm (ø inch)  | 6.35(1/4") / 12.7(1/2")              |
| Refrigerant line (one way) length                |                         | m  | Max. 30                              |
| Vertical height differences                      | Outdoor is higher/lower | m  | Max. 20 / Max.20                     |
| Outdoor operating temperature range              | Cooling                 | °C   | -15~46                               |
|  | Heating                 |  | -20~24                               |
| Panel  |                         | TC-PSA-5AW-E, TC-PSAE-5AW-E (Honeycomb) / TC-PSAG-5AW-E, TC-PSAGE-5AW-E (Grid) |                                      |
| Energy Class (Cooling/Heating)                   |                         | A++/A+   |                                      |
| SEER   |                         | 6.52   |                                      |
| SCOP (Average climate)                           |                         | 4.30   |                                      |
| Pdesign (cooling/heating(@-10°C))                |                         | kW   | 5.0/4.3                              |
| Annual Electricity Consumption (cooling/heating) |                         | kWh/a  | 269/1401                             |
| Designated Heating Season                        |                         | Average  |                                      |

- The data is measured under the following conditions(ISO-T1, H1). Cooling: Indoor temp. of 27°CDB, 19°CWB, and outdoor temp. of 35°CDB. Heating: Indoor temp. of 20°CDB, and outdoor temp. of 7°CDB, 6°CWB.
  - Sound level indicates the value in an anechoic chamber. During operation these values are somewhat higher due to ambient conditions.
  - 'tonne(s) of CO2 equivalent' means a quantity of greenhouse gases- expressed as the product of the weight of the greenhouse gases in metric tonnes and of their global warming potential.
- \*1 The maximum external static pressure can be used up to 35Pa (25•35ZS) , 50Pa (50 •60ZS) , but the airflow will be reduced.

# Schematics

Unit: mm

Models FDTC40VH, 50VH, 60VH



| Examples installation | I    | II   | III  | IV   |
|-----------------------|------|------|------|------|
| Size L1               | Open | 280  | 280  | 180  |
| L2                    | 100  | 75   | Open | Open |
| L3                    | 100  | 80   | 80   | 80   |
| L4                    | 250  | Open | 250  | Open |

Unit:mm

(2) Outdoor units  
Models SRC50ZSX-W3, 60ZSX-W3