



# SRF25ZS-W / SRC25ZS-W2

2.5 (0.9 ~ 3.1)

Indoor Unit : SRK25ZS-W

Outdoor Unit : SRC25ZS-W2

## Specifications

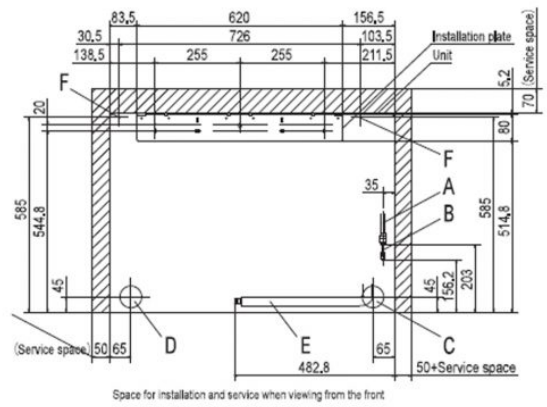
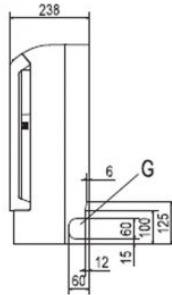
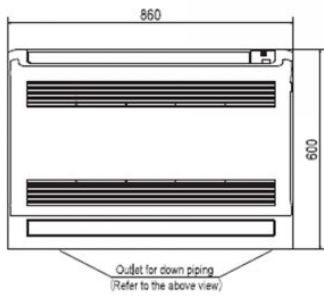
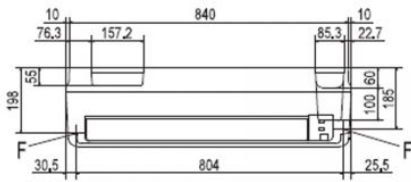


Indoor unit			SRK25ZS-W
Outdoor unit			SRC25ZS-W2
Power source			1 Phase, 220 - 240V, 50HZ
Nominal cooling capacity (Min~Max)		kW	2.5 (0.9 ~ 3.1)
Nominal heating capacity (Min~Max)		kW	2.9 (0.8 ~ 3.7)
Power consumption	Cooling/Heating	kW	0.59 / 0.66
EER/COP	Cooling/Heating		4.24 / 4.39
Max. running current		A	9
Sound power level	Indoor	Cooling/Heating	50 / 51
	Outdoor	Cooling/Heating	59 / 60
Sound pressure level	Indoor	Cooling (Hi/Me/Lo/Ulo)	38 / 32 / 29 / 25
		Heating (Hi/Me/Lo/Ulo)	39 / 35 / 33 / 29
	Outdoor	Cooling/Heating	45 / 47
Air flow	Indoor	Cooling (Hi/Me/Lo/Ulo)	9.0 / 7.6 / 6.7 / 5.8
		Heating (Hi/Me/Lo/Ulo)	10.5 / 8.2 / 7.7 / 6.6
	Outdoor	Cooling/Heating	27.4 / 27.4
Exterior Dimensions	Indoor	Height x Width x Depth	600 x 860 x 238
	Outdoor		540 x 780(+62) x 290
Net weight	Indoor / Outdoor	kg	18.0 / 31.0
Refrigerant	Type/GWP		R32/675
Refrigerant	Charge	kg/TCO2Eq	0.62 / 0.419
Refrigerant piping size	Liquid/Gas	mm (ø inch)	6.35(1/4") / 9.52 (3/8")
Refrigerant line (one way) length		m	Max.20 [10]
Vertical height differences	Outdoor is higher/lower	m	Max. 10 / Max.10
Outdoor operating temperature range	Cooling	°C	-15~46
	Heating		-15 ~ 24
Clean filter			Allergen Clean Filter x 1 Photocatalytic Washable Deodorising Filter x 1
Energy Class (Cooling/Heating)			A+ +/A+
SEER			7.40
SCOP (Average climate)			4.00

- The data is measured under the following conditions(ISO-T1, H1). Cooling: Indoor temp. of 27°CDB, 19°CWB, and outdoor temp. of 35°CDB. Heating: Indoor temp. of 20°CDB, and outdoor temp. of 7°CDB, 6°CWB.
- Sound level indicates the value in an anechoic chamber. During operation these values are somewhat higher due to ambient conditions.
- 'tonne(s) of CO2 equivalent' means a quantity of greenhouse gases- expressed as the product of the weight of the greenhouse gases in metric tonnes and of their global warming potential.
- SEER/SCOP are based on EN14825:2016 and Commission regulation (EU) No.2016/2281

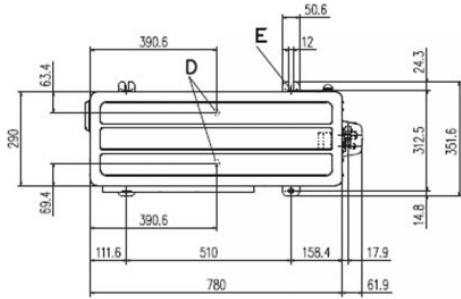
## Schematics

### SRF25ZS-W SRF35ZS-W SRF50ZSX-W SRF25ZMX-S SRF35ZMX-S SRF50ZMX-S



Symbol	Content
A	Gas piping Model 25.35 - $\phi 9.52(3/8")$ (Flare)
B	Liquid piping Model 50 - $\phi 12.7(1/2")$ (Flare)
C	Hole on wall for right rear piping ( $\phi 65$ )
D	Hole on wall for left rear piping ( $\phi 65$ )
E	Drain hose VP16
F	Screw point (fasten the indoor unit) $\phi 5$
G	Outlet for piping (on both side)

**SRC20ZS-W,-S SRC25ZS-W2,-S SRC35ZS-W2,-S**



Symbol	Content	
A	Service valve connection (gas side)	φ9.52 (3/8") (Flare)
B	Service valve connection (liquid side)	φ6.35 (1/4") (Flare)
C	Pipe/cable draw-out hole	
D	Drain discharge hole	φ20×2places
E	Anchor bolt hole	M10×4places

Examples of installation Dimensions	Minimum installation space			
	I	D	DE	W
L1	Open	280	280	180
L2	100	75	Open	Open
L3	100	80	80	80
L4	250	Open	250	Open

