



SRK20ZTX-WA / SRC20ZTX-WA

2.0 (0.9~3.5)

Indoor Unit : SRK20ZTX-WA

Outdoor Unit : SRC20ZTX-WA

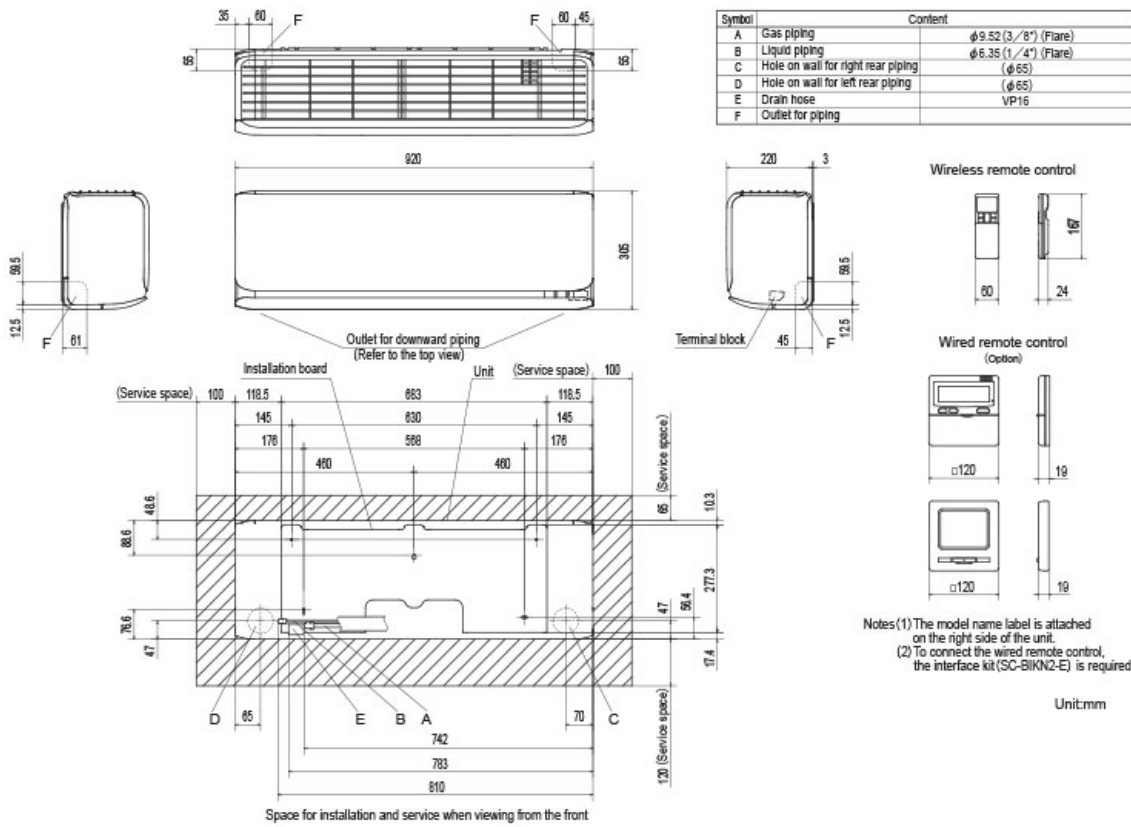
Specifications

R32

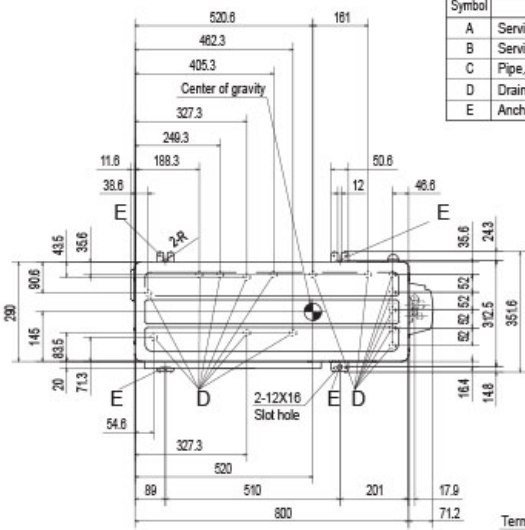
Indoor unit		SRK20ZTX-WA	
Outdoor unit		SRC20ZTX-WA	
Power source		1 Phase, 220 - 240V, 50Hz / 220V, 60Hz	
Nominal cooling capacity (Min~Max)		kW	2.0 (0.9~3.5)
Nominal heating capacity (Min~Max)		kW	2.7 (0.9~7.6)
Power consumption	Cooling/Heating	kW	0.32 / 0.47
EER/COP	Cooling/Heating		6.25 / 5.74
Max. running current		A	14.5
Sound power level	Indoor	Cooling/Heating	52 / 53
	Outdoor	Cooling/Heating	55 / 57
Sound pressure level	Indoor	Cooling (Hi/Me/Lo/Ulo)	dB(A) 38 / 31 / 24 / 19
		Heating (Hi/Me/Lo/Ulo)	
	Outdoor	Cooling/Heating	43 / 45
Air flow	Indoor	Cooling (Hi/Me/Lo/Ulo)	m3/min 10.7 / 8.6 / 5.8 / 4.8
		Heating (Hi/Me/Lo/Ulo)	
	Outdoor	Cooling/Heating	31.0 / 31.0
Exterior Dimensions	Indoor	Height x Width x Depth	mm
	Outdoor		
			640 x 800(+71) x 290
Net weight	Indoor / Outdoor	kg	13.0 / 45.0
Refrigerant	Type/GWP		R32 / 675
Refrigerant	Charge	kg/TCO2Eq	1.25
Refrigerant piping size	Liquid/Gas	mm (ø inch)	6.35(1/4") / 9.52(3/8")
Refrigerant line (one way) length		m	Max.25
Vertical height differences	Outdoor is higher/lower	m	Max.15 / Max.15
Outdoor operating temperature range	Cooling	°C	-15~46°C
	Heating		-25~24°C
Clean filter		Allergen Clear Filter x 1, Photocatalytic Washable Deodorizing Filter x 1	
Energy Class (Cooling/Heating)		A+++ / A+++	
SEER		9.60	
SCOP (Average climate)		5.20	
Pdesign (cooling/heating(@-10°C))		kW	2.00/2.80
Annual Electricity Consumption (cooling/heating)		kWh/a	73/755
Designated Heating Season		Average	

- The data is measured under the following conditions(ISO-T1, H1). Cooling: Indoor temp. of 27°CDB, 19°CWB, and outdoor temp. of 35°CDB. Heating: Indoor temp. of 20°CDB, and outdoor temp. of 7°CDB, 6°CWB.
- Sound level indicates the value in an anechoic chamber. During operation these values are somewhat higher due to ambient conditions.
- 'tonne(s) of CO2 equivalent' means a quantity of greenhouse gases- expressed as the product of the weight of the greenhouse gases in metric tonnes and of their global warming potential.

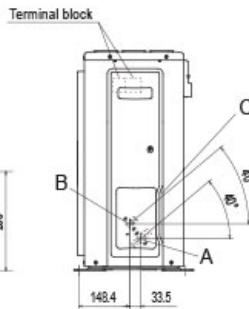
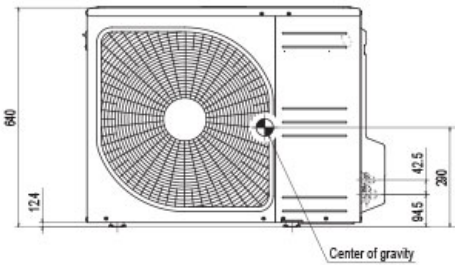
Schematics



(1) Indoor units
Models SRK20ZTX-WA, 25ZTX-WA, 35ZTX-WA

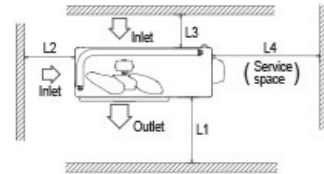


Symbol	Content
A	Service valve connection (gas side) $\phi 9.52(3/8)$ (Flare)
B	Service valve connection (liquid side) $\phi 6.35(1/4)$ (Flare)
C	Pipe/cable draw-out hole
D	Drain discharge hole
E	Anchor bolt hole $\phi 20 \times 15$ places



Notes

- (1) The unit must not be surrounded by walls on the four sides.
- (2) The unit must be fixed with anchor bolts. An anchor bolt must not protrude more than 15mm.
- (3) If the unit is installed in the location where there is a possibility of strong winds, place the unit such that the direction of air from the outlet gets perpendicular to the wind direction.
- (4) Leave 200mm or more space above the unit.
- (5) The wall height on the outlet side should be 1200mm or less.
- (6) The model name label is attached on the right side of the unit.



Minimum installation space

Example installation	I	II	III	IV
Size				
L1	Open	280	280	180
L2	100	75	Open	Open
L3	100	80	80	80
L4	250	Open	250	Open

Unit:mm

(2) Outdoor units

Models SRC20ZTX-WA, 25ZTX-WA, 35ZTX-WA