



SRK35ZTX-WA / SRC35ZTX-WA

3.5 (0.9~4.5)

Indoor Unit : SRK35ZTX-WA

Outdoor Unit : SRC35ZTX-WA

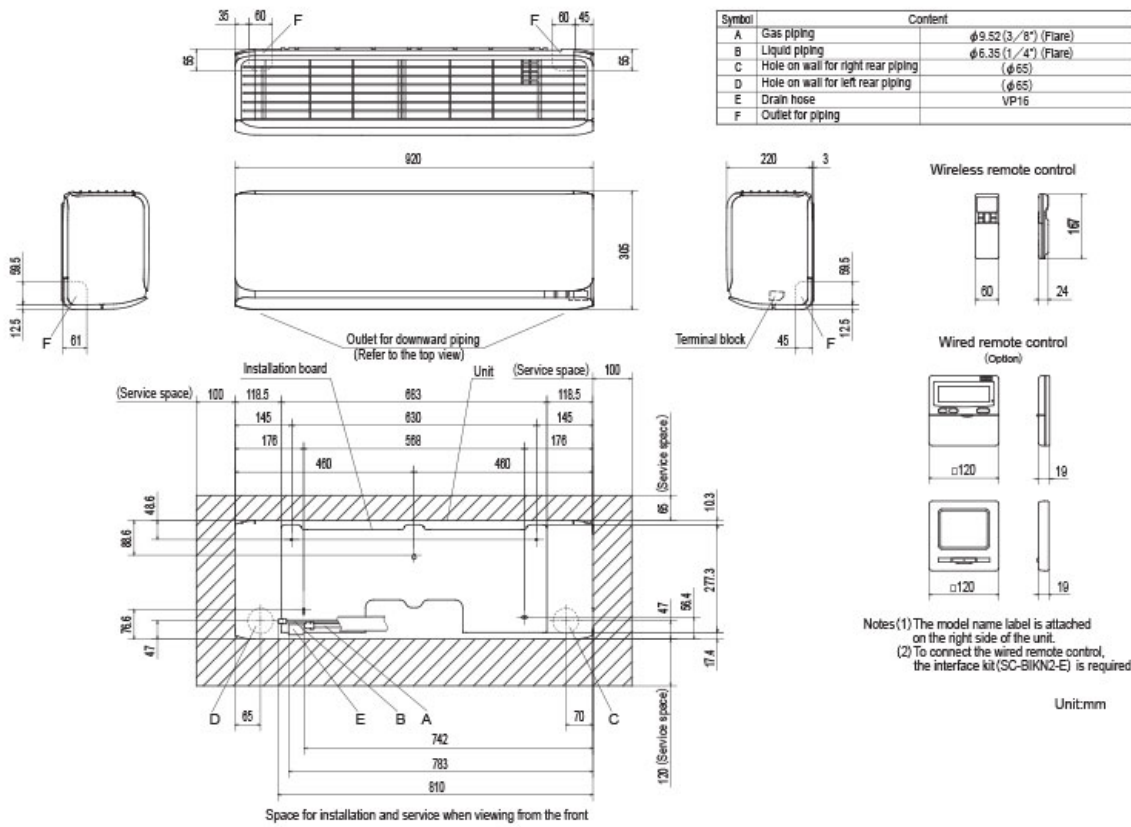
Specifications

R32

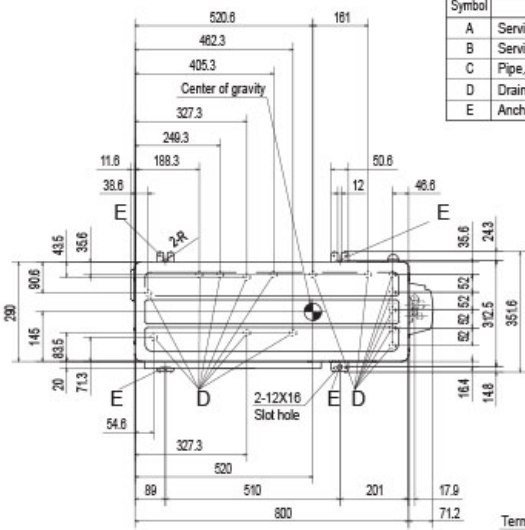
Indoor unit			SRK35ZTX-WA
Outdoor unit			SRC35ZTX-WA
Power source			1 Phase, 220 - 240V, 50Hz / 220V, 60Hz
Nominal cooling capacity (Min~Max)		kW	3.5 (0.9~4.5)
Nominal heating capacity (Min~Max)		kW	4.3 (0.9~8.0)
Power consumption	Cooling/Heating	kW	0.74 / 0.87
EER/COP	Cooling/Heating		4.73 / 4.94
Max. running current		A	14.5
Sound power level	Indoor	Cooling/Heating	57 / 57
	Outdoor	Cooling/Heating	59 / 58
Sound pressure level	Indoor	Cooling (Hi/Me/Lo/Ulo)	dB(A) 43 / 35 / 26 / 19
		Heating (Hi/Me/Lo/Ulo)	
	Outdoor	Cooling/Heating	47 / 47
Air flow	Indoor	Cooling (Hi/Me/Lo/Ulo)	m3/min 13.2 / 10.3 / 7.0 / 4.8
		Heating (Hi/Me/Lo/Ulo)	
	Outdoor	Cooling/Heating	35.8 / 31.0
Exterior Dimensions	Indoor	Height x Width x Depth	mm
	Outdoor		
			640 x 800 (+71) x 290
Net weight	Indoor / Outdoor		kg
			13.0 / 45.0
Refrigerant	Type/GWP		R32 / 1.25
Refrigerant	Charge	kg/TCO2Eq	1.25
Refrigerant piping size	Liquid/Gas	mm (ø inch)	6.35(1/4") / 9.52(3/8")
Refrigerant line (one way) length		m	Max.25
Vertical height differences	Outdoor is higher/lower	m	Max.15 / Max.15
Outdoor operating temperature range	Cooling	°C	-15~46°C
	Heating		
Clean filter			Allergen Clear Filter x 1, Photocatalytic Washable Deodorizing Filter x 1
Energy Class (Cooling/Heating)			A+++ / A+++
SEER			9.50
SCOP (Average climate)			5.10
Pdesign (cooling/heating(@-10°C))		kW	3.50/3.40
Annual Electricity Consumption (cooling/heating)		kWh/a	129/934
Designated Heating Season			Average

- The data is measured under the following conditions(ISO-T1, H1). Cooling: Indoor temp. of 27°CDB, 19°CWB, and outdoor temp. of 35°CDB. Heating: Indoor temp. of 20°CDB, and outdoor temp. of 7°CDB, 6°CWB.
- Sound level indicates the value in an anechoic chamber. During operation these values are somewhat higher due to ambient conditions.
- 'tonne(s) of CO2 equivalent' means a quantity of greenhouse gases- expressed as the product of the weight of the greenhouse gases in metric tonnes and of their global warming potential.

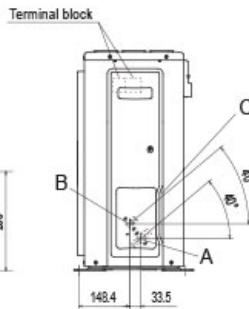
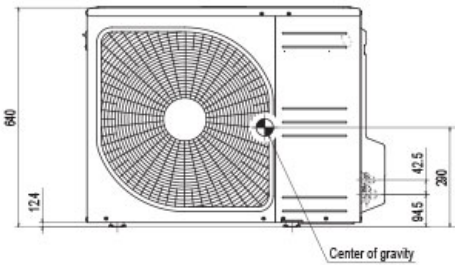
Schematics



(1) Indoor units
 Models SRK20ZTX-WA, 25ZTX-WA, 35ZTX-WA

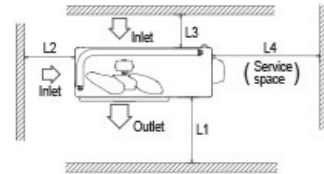


Symbol	Content
A	Service valve connection (gas side) $\phi 9.52(3/8)$ (Flare)
B	Service valve connection (liquid side) $\phi 6.35(1/4)$ (Flare)
C	Pipe/cable draw-out hole
D	Drain discharge hole $\phi 20 \times 15$ places
E	Anchor bolt hole M10-12 $\times 4$ places



Notes

- (1) The unit must not be surrounded by walls on the four sides.
- (2) The unit must be fixed with anchor bolts. An anchor bolt must not protrude more than 15mm.
- (3) If the unit is installed in the location where there is a possibility of strong winds, place the unit such that the direction of air from the outlet gets perpendicular to the wind direction.
- (4) Leave 200mm or more space above the unit.
- (5) The wall height on the outlet side should be 1200mm or less.
- (6) The model name label is attached on the right side of the unit.



Minimum installation space

Example installation	I	II	III	IV
Size				
L1	Open	280	280	180
L2	100	75	Open	Open
L3	100	80	80	80
L4	250	Open	250	Open

Unit:mm

(2) Outdoor units

Model is SRC020ZTX-WA, 25ZTX-WA, 35ZTX-WA